

Whispering Pine “Craftsman”



The spirit of Whispering Pine is very Stickley. The Craftsman house features a gracious front porch, stone chimney, and shingle roof. At 2,140 square feet, the plan is unprecedentedly efficient, with three bedrooms, two-and-a-half baths, and an open living area built with green design in mind. The stairway is situated in the middle of the house, offering the sense of safety and seclusion. The luxurious master suite contains a spa-like bath and

pocket doors. Like the kitchen, it opens onto a private garden oasis through French doors. Upstairs are two additional bedrooms connected by a Jack-and-Jill bath as well as a loft that is ideal as a retreat or workspace.

3 Bedrooms, 2.5 Baths
2,140 Total Square Feet

www.TheVillageAtHendrix.com | 501.450.1415 | Info@TheVillageAtHendrix.com
1600 Washington Ave., Conway, AR 72032

Drawings are provided to illustrate the conceptual design of the home and may reflect options and features not included in the base price. Consult with a builder for price of house as shown. All dimensions approximate.





FRONT



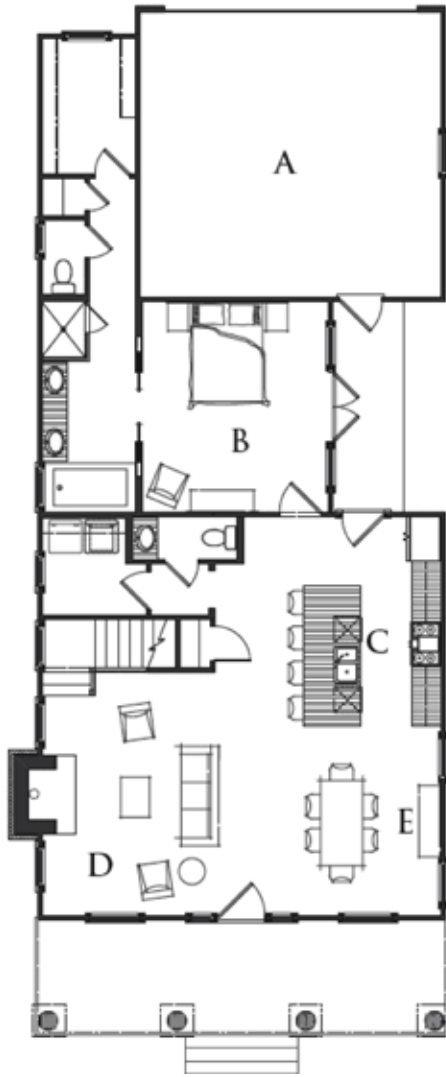
BACK



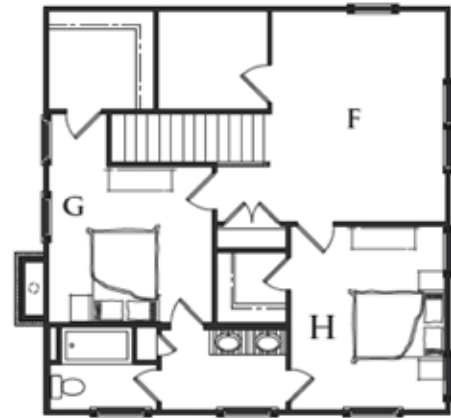
RIGHT



LEFT



FIRST FLOOR



SECOND FLOOR

WHISPERING PINE
 STYLE - CRAFTSMAN
 3 BEDROOMS, 2.5 BATHS
 2,140 TOTAL SQUARE FEET

A. GARAGE 21-5 X 20-3
 B. MASTER BEDROOM 13-3 X 15-0
 C. KITCHEN 14-0 X 15-0
 D. FAMILY ROOM 12-4 X 17-3

E. DINING ROOM 14-0 X 13-5
 F. PLAY/STUDY 12-5 X 15-1
 G. BEDROOM 2 11-9 X 11-1
 H. BEDROOM 3 11-1 X 13-0