

# Hot Springs and Magic Springs

## Equipment and Trip Information

### Peer Leader

Torey Hayward '12

### Orientation Leaders

Tess Benham '13

Rebecca Cox '13

Trey Kalbaugh '13

### Faculty/Staff Advisor

Jennifer McKenzie

Assistant Director of Admission



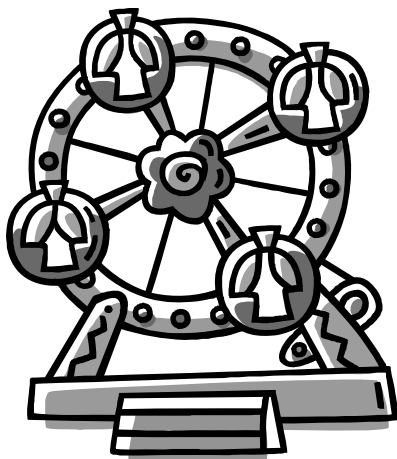
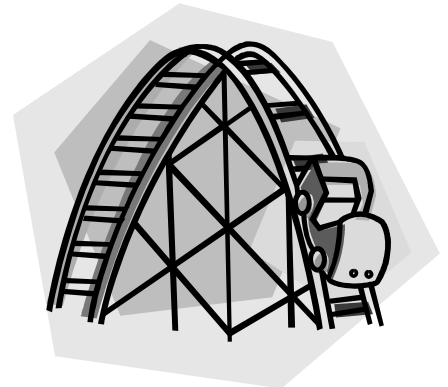
## What to Bring:

**Sleeping:** Pillow (bedding is provided)

**Clothing:** Comfortable clothes for walking around all day at a theme park. You should also bring your tennis shoes.

**Toiletries:** Toothbrush and paste, towel, soap, deodorant, sunscreen, etc.

**Extras:** Water Bottle, Spending money, Swimsuit, Camera



**What you'll be doing:** You will be staying in cabins at Knollwood Lodge in Hot Springs, just a short drive away from the state's only theme park Magic Springs. On Saturday you will be given the entire day to spend at Magic Springs riding roller coasters and enjoying the weather. You can spend your time at the lodge getting to know your classmates.

**Don't Forget:** Your trip leaves tentatively at 3:00 on Friday, August 20th. Be sure to check with your leaders to confirm that time.