

Hot Springs and Magic Springs

Equipment and Trip Information

Peer Leader

Drew Allen '15

Orientation Leaders

Hanna French '15

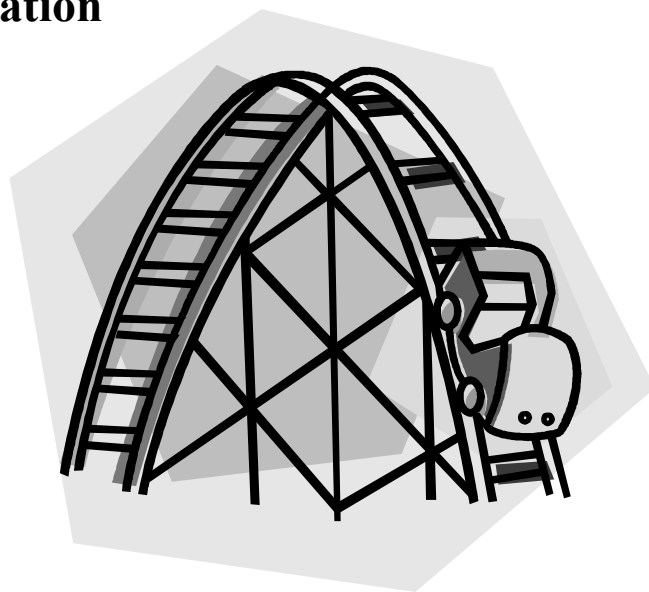
Mary Katherine Barker '16

Zach Hausle '14

Faculty/Staff Advisor

Leigh Lassiter-Counts

Associate Director of Career Services
and Internship Coordinator



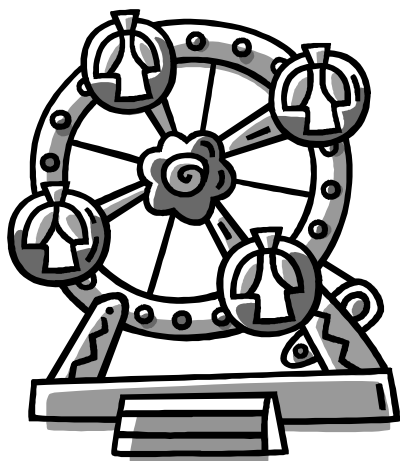
What to Bring:

Sleeping: Pillow (bedding is provided)

Clothing: Comfortable clothes for walking around all day at a theme park. You should also bring your tennis shoes.

Toiletries: Toothbrush and paste, towel, soap, deodorant, sunscreen, etc.

Extras: Water Bottle, Spending money, Swimsuit, Camera



What you'll be doing: You will be staying in cabins at Knollwood Lodge in Hot Springs, just a short drive away from the state's only theme park Magic Springs. On Saturday you will be given the entire day to spend at Magic Springs riding roller coasters and enjoying the weather. You can spend your time at the lodge getting to know your classmates.

Don't Forget: Your trip leaves tentatively at 3:00 on Friday, August 23rd. Be sure to check with your leaders to confirm that time.